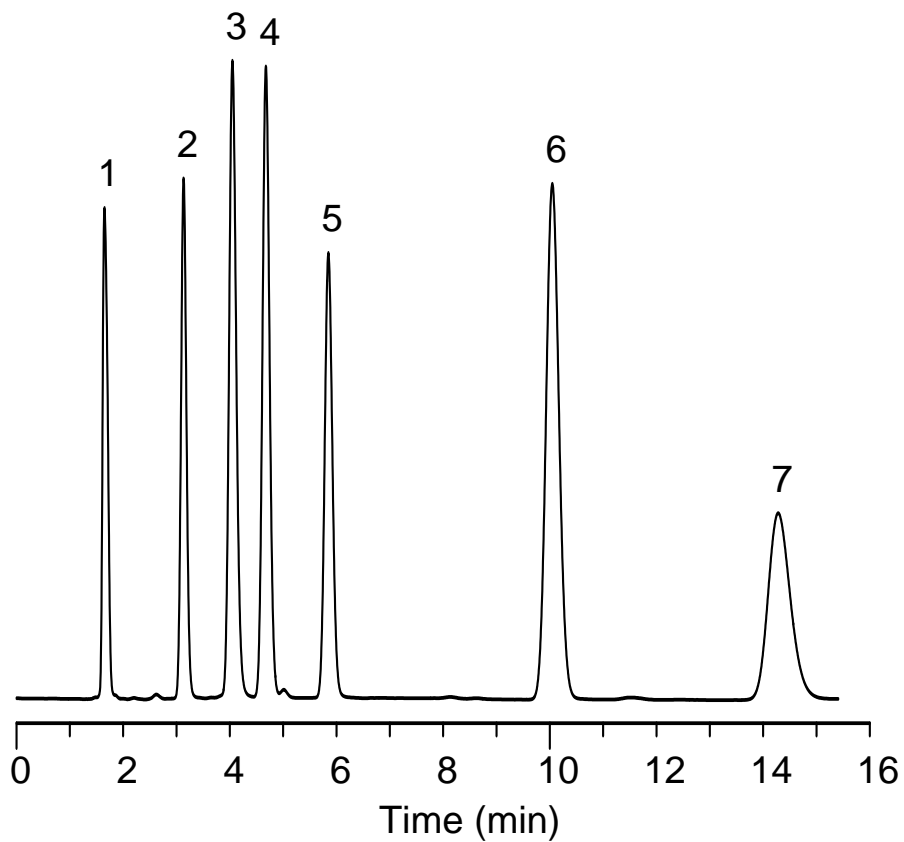


## Neue Test

- Columns: Listed on chromatograms  
Dimensions: 150×4.6mm 5μm(all columns)  
Mobile Phase: MeOH: 20mM KH<sub>2</sub>PO<sub>4</sub>+K<sub>2</sub>HPO<sub>4</sub>(pH=7.0)=80:20  
Flow Rate: 1.0ml/min  
Temperature: Ambient  
Detector: UV 254nm  
Sample:
1. Uracil
  2. Butyl paraben
  3. Propranolol
  4. Dipropyl phthalate
  5. Naphthalene
  6. Acenaphthene
  7. Amitriptyline

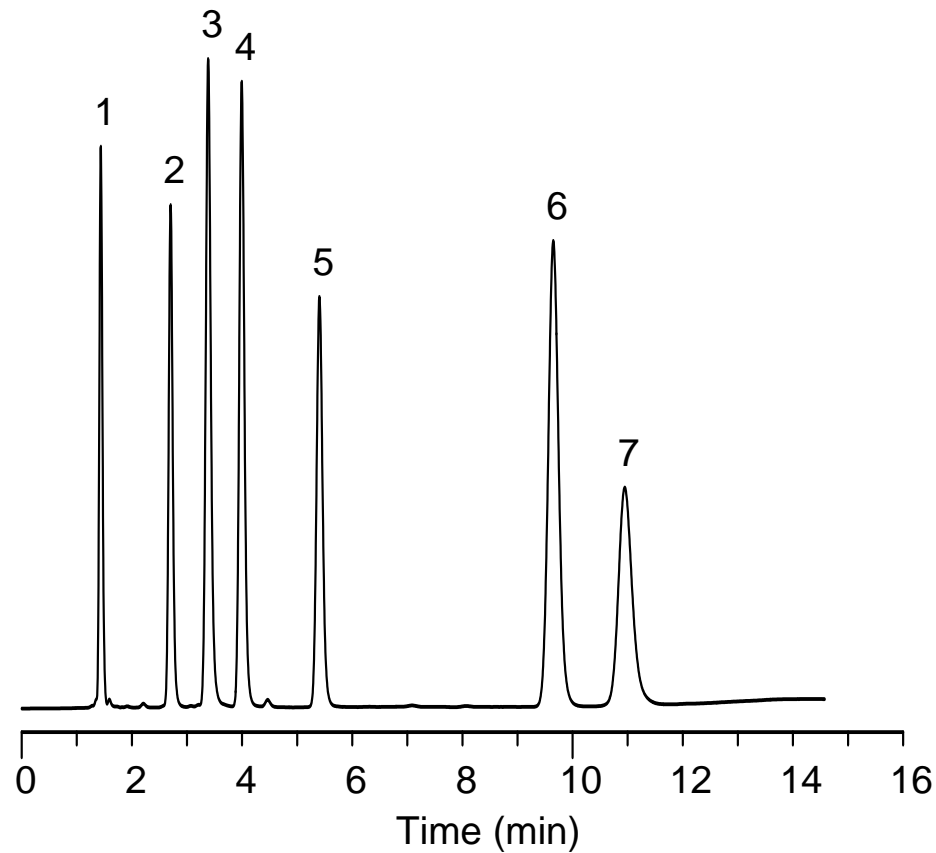
\*ZORBAX,HC,TC,Eclipse are registered trademarks of Agilent Technologies.Gemini,Luna are registered trademarks of Phenomenex. Symmetry,XBridge are registered trademarks of Waters Corporation. BECKMAN Coulter is registered trademark of Beckman Coulter, Inc. SMT is registered trademark of Analtech Inc.Dikma Technologies is not affiliated with the above companies.

### Diamonsil C18



[China](#)

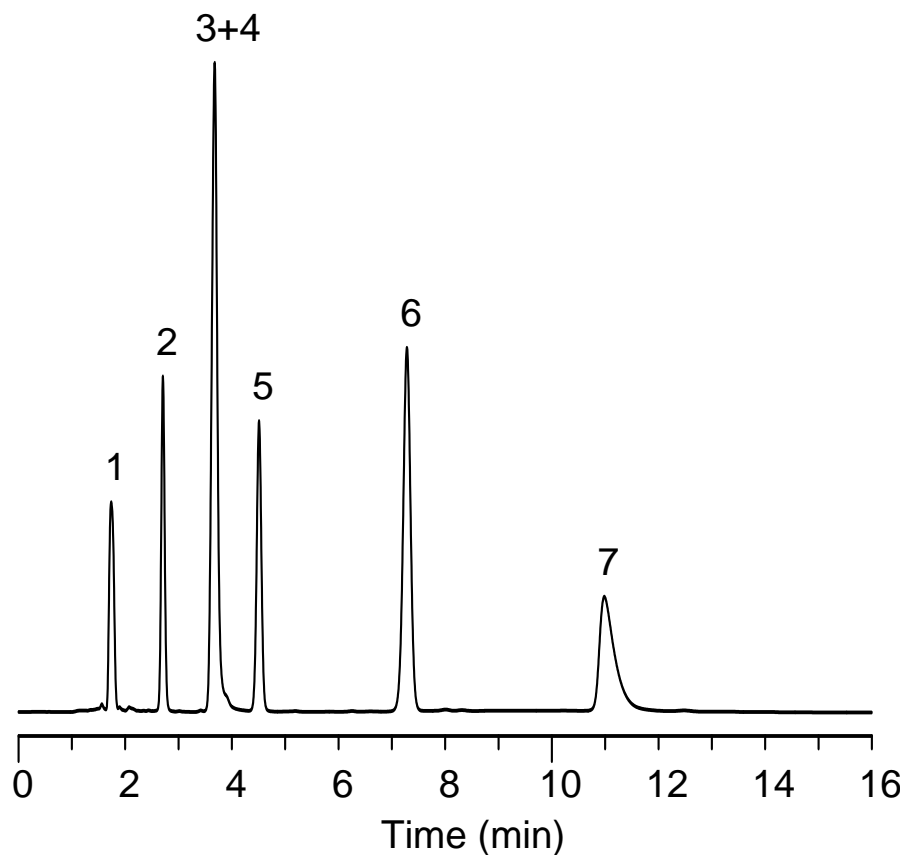
### Inspire



[Canada](#)

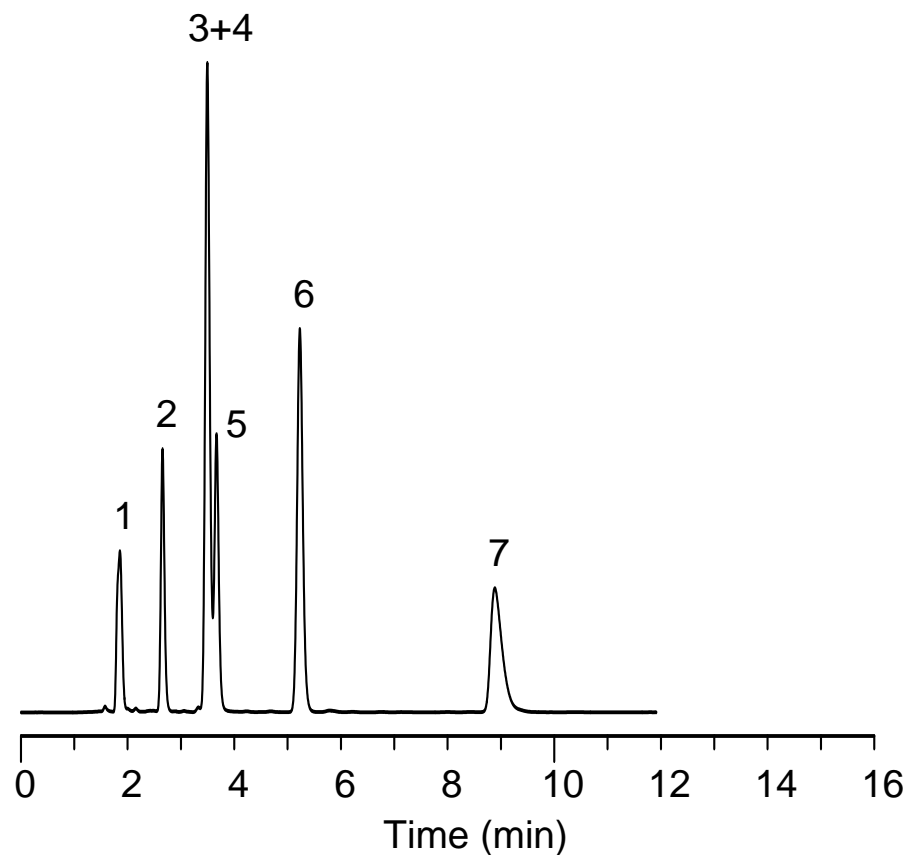
[US](#)

**\*Agilent HC-C18**



[China](#)

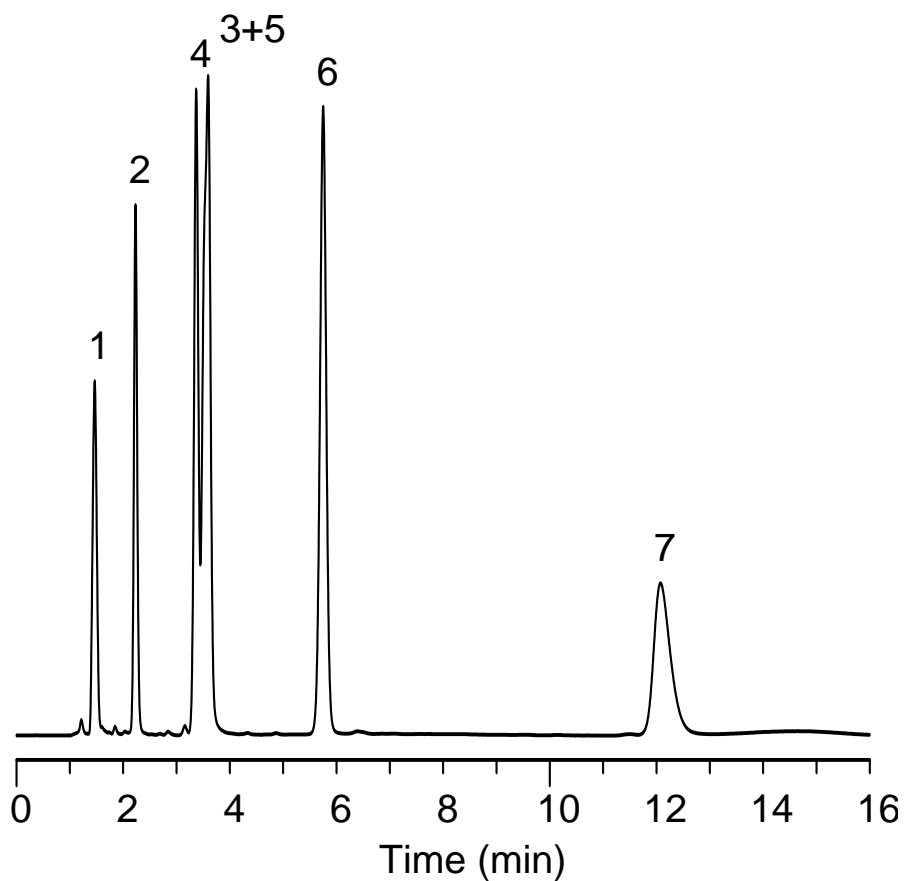
**\*Agilent TC-C18**



[Canada](#)

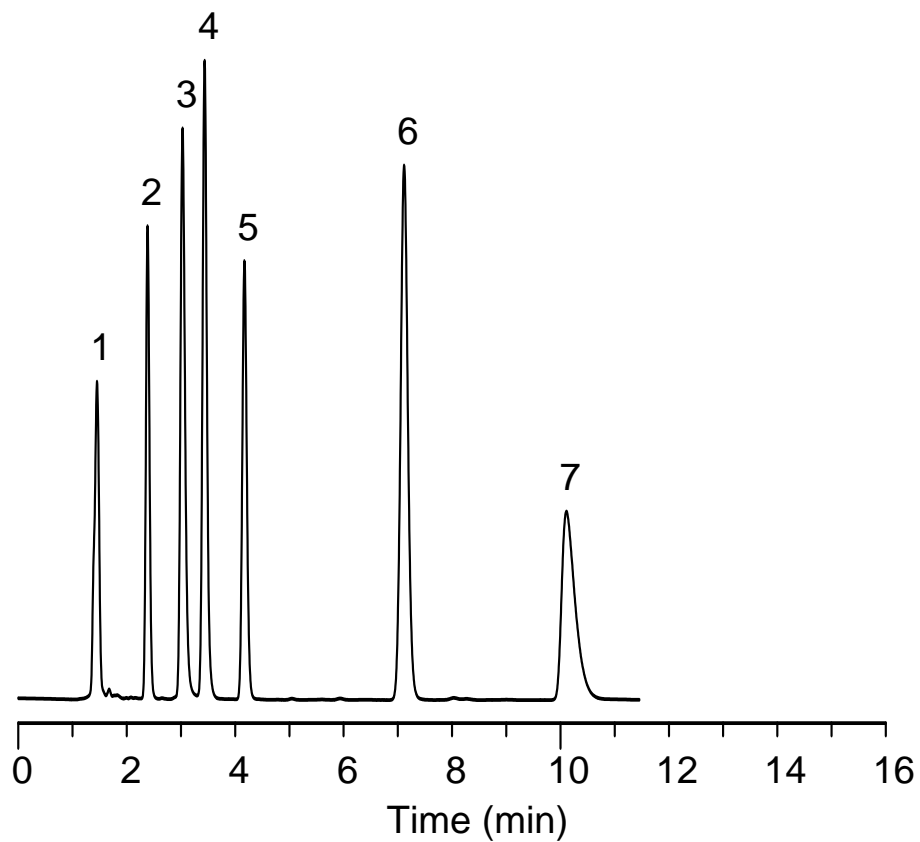
[US](#)

**\*Agilent Zorbax SB-C18**



[China](#)

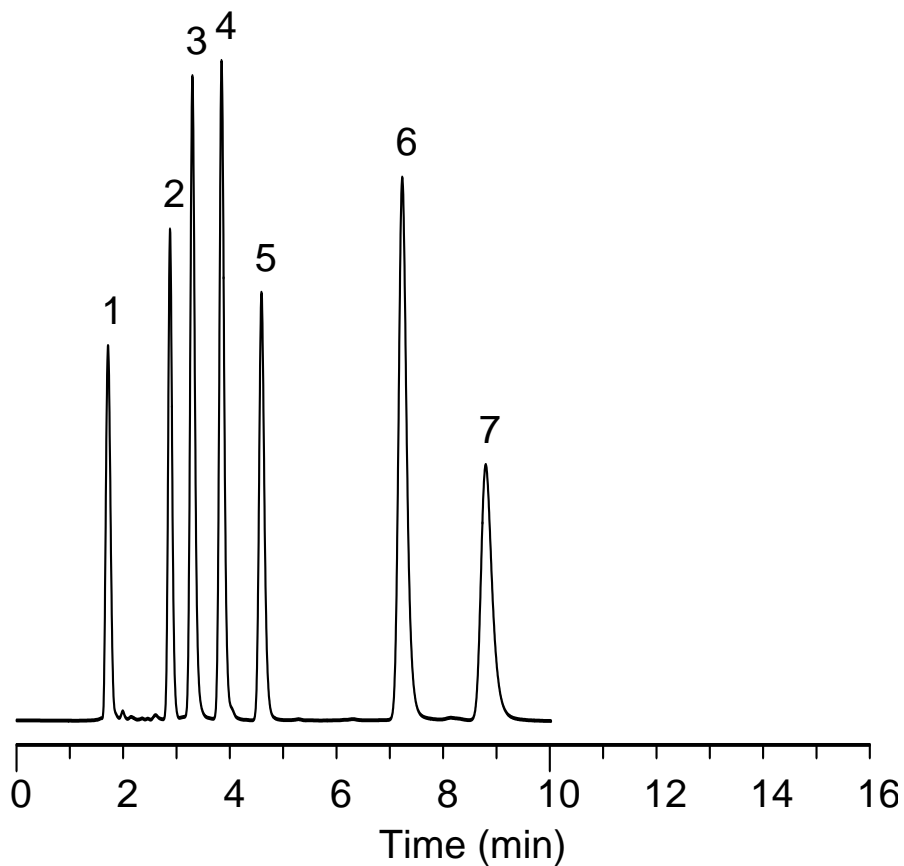
**\*Agilent Eclipse XDB-C18**



[Canada](#)

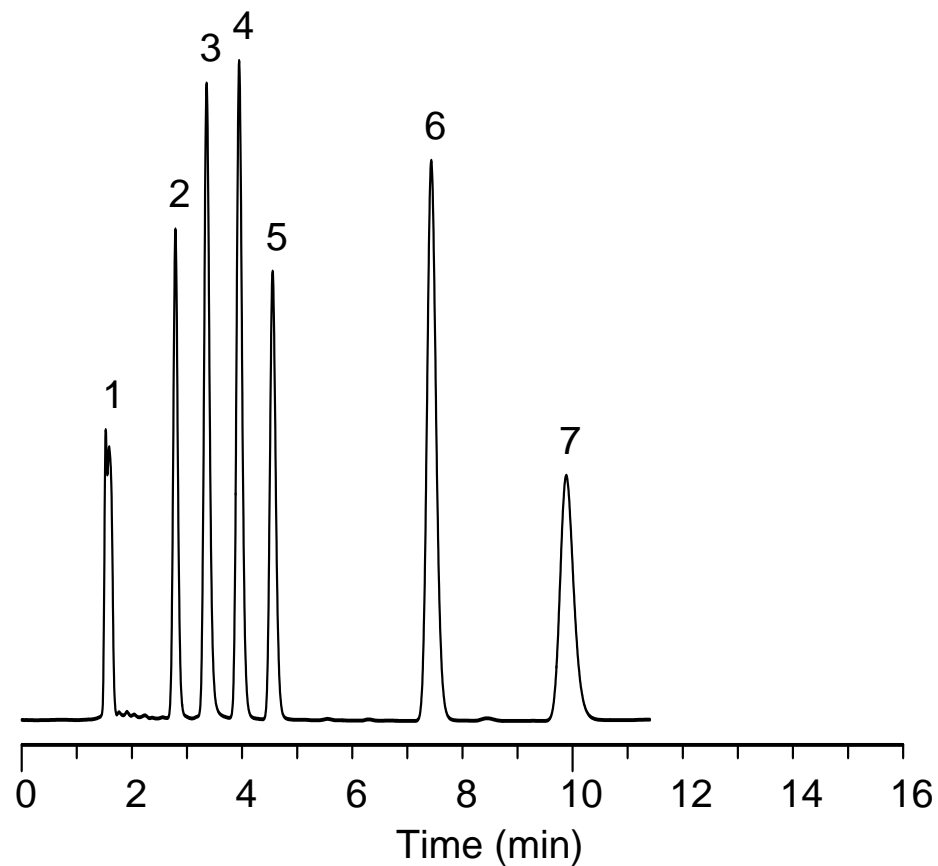
[US](#)

**\*Phenomenex Gemini-C18**



[China](#)

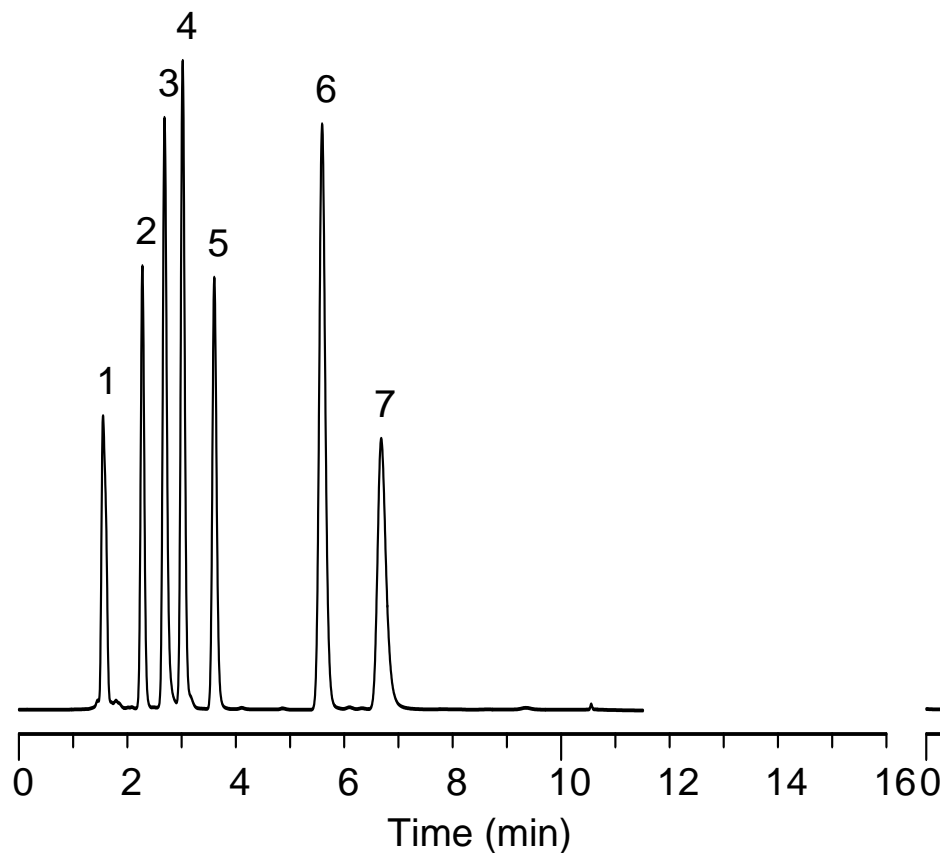
**\*Phenomenex Luna-C18(2)**



[Canada](#)

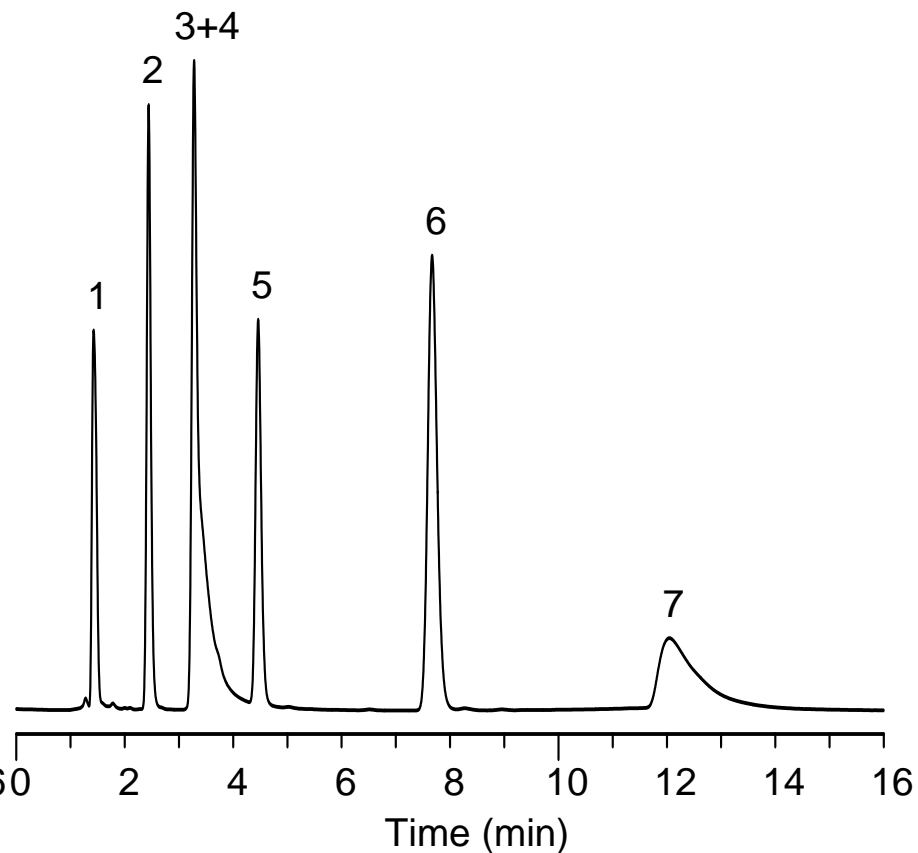
[US](#)

**\*Waters Xbridge-C18**



[China](#)

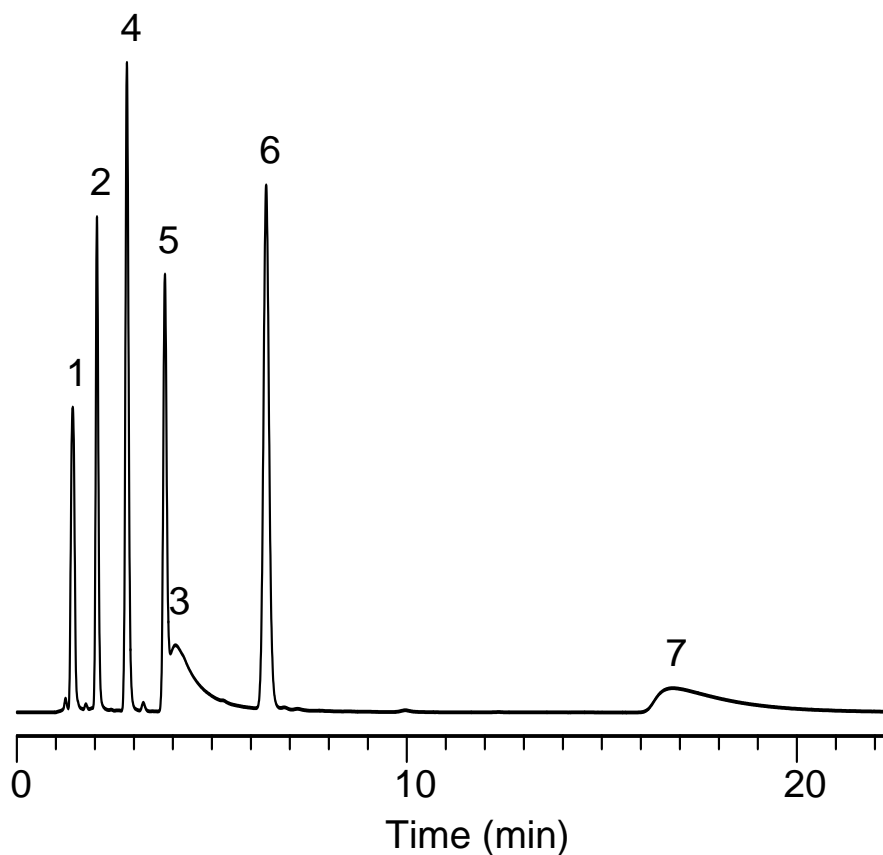
**\*Waters Symmetry-C18**



[Canada](#)

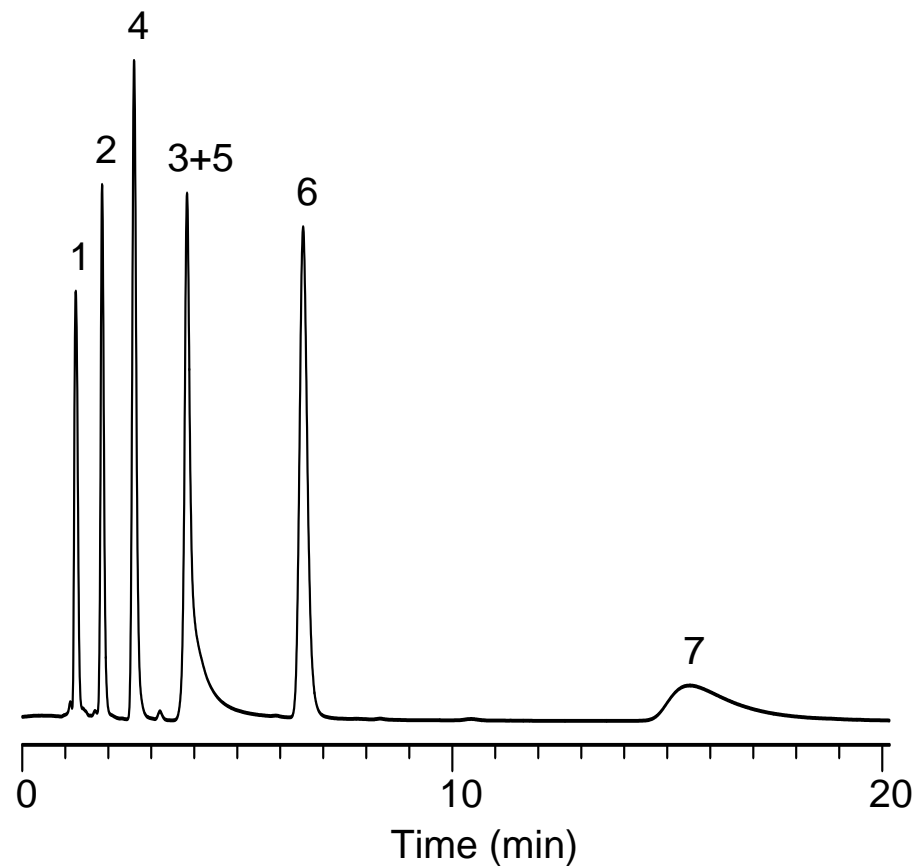
[US](#)

**\*BECKMAN Coulter-C18**



[China](#)

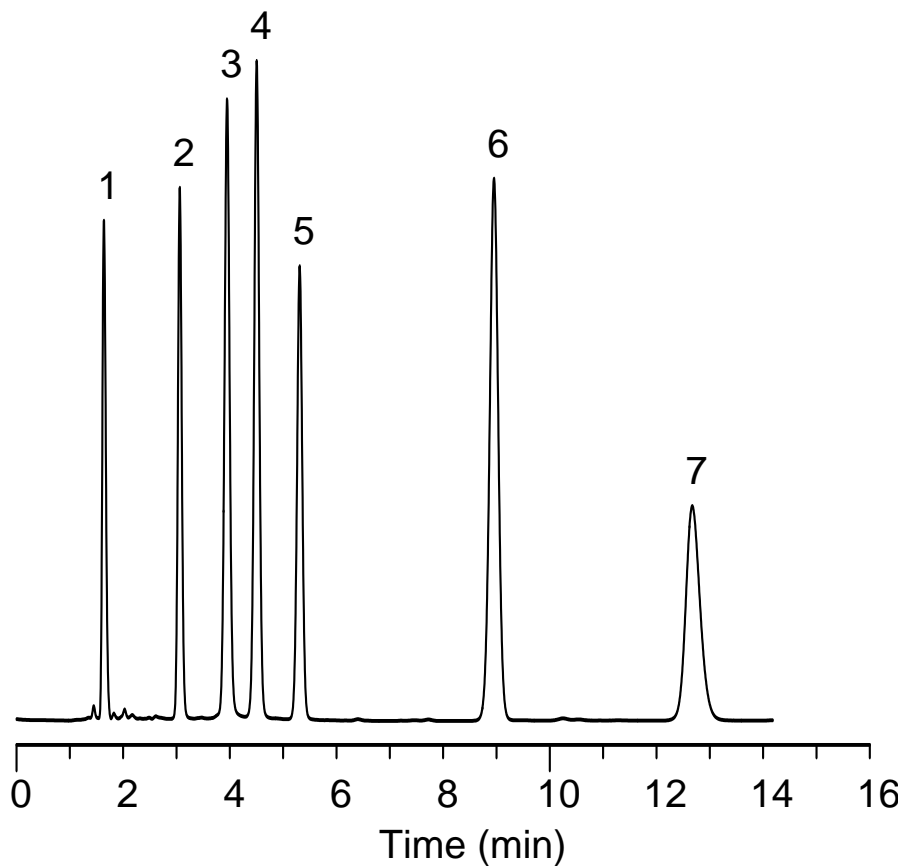
**\*SMT-C18**



[Canada](#)

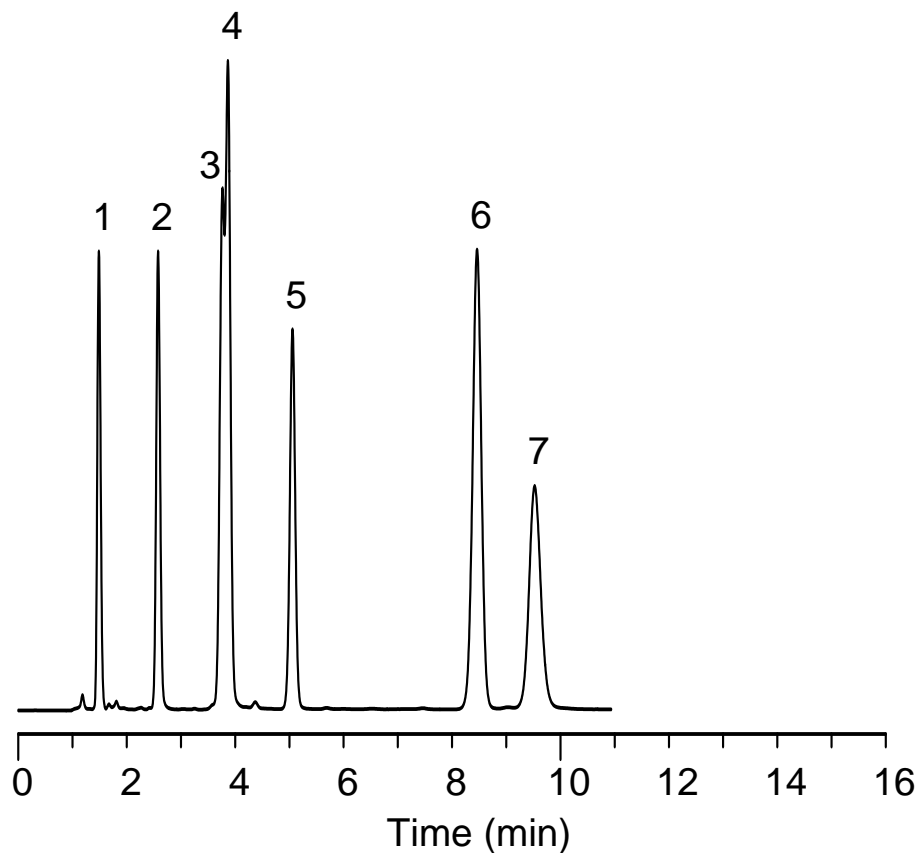
[US](#)

**Platisil C18**



[China](#)

**Platisil C18 (2)**



[Canada](#)

[US](#)



| <b>Column</b>            | <b>As(Amitriptyline)</b> |
|--------------------------|--------------------------|
| Diamonsil C18            | 1.261                    |
| Inspire                  | 1.242                    |
| *Agilent HC-C18          | 2.252                    |
| *Agilent TC-C18          | 1.862                    |
| *Agilent Zorbax SB-C18   | 1.546                    |
| *Agilent Eclipse XDB-C18 | 1.976                    |
| *Phenomenex Gemini-C18   | 1.468                    |
| *Phenomenex *Luna-C18(2) | 1.272                    |
| *Waters Xbridge-C18      | 1.412                    |
| *Waters Symmetry-C18     | 2.778                    |
| *BECKMAN Coulter-C18     | 2.053                    |
| *SMT-C18                 | 1.866                    |
| Platisil C18             | 1.238                    |
| Platisil C18(2)          | 1.121                    |